

---

# ORCalc

## Installation Guide

ver. 1.5

## Version History

Version	Date
v.1.0	9 <sup>th</sup> June 2009
v.1.1	9 <sup>th</sup> December 2009
v.1.2	25 <sup>th</sup> August 2010
v.1.3	17 <sup>th</sup> March 2011
v.1.4	21 <sup>st</sup> June 2012
<b>v.1.5</b>	<b>25<sup>th</sup> August 2020</b>

## Key changes to previous version

Page	Comment
<b>All</b>	<b>Updated to reflect installing ORCalc v4.0.4 on Windows 10</b>

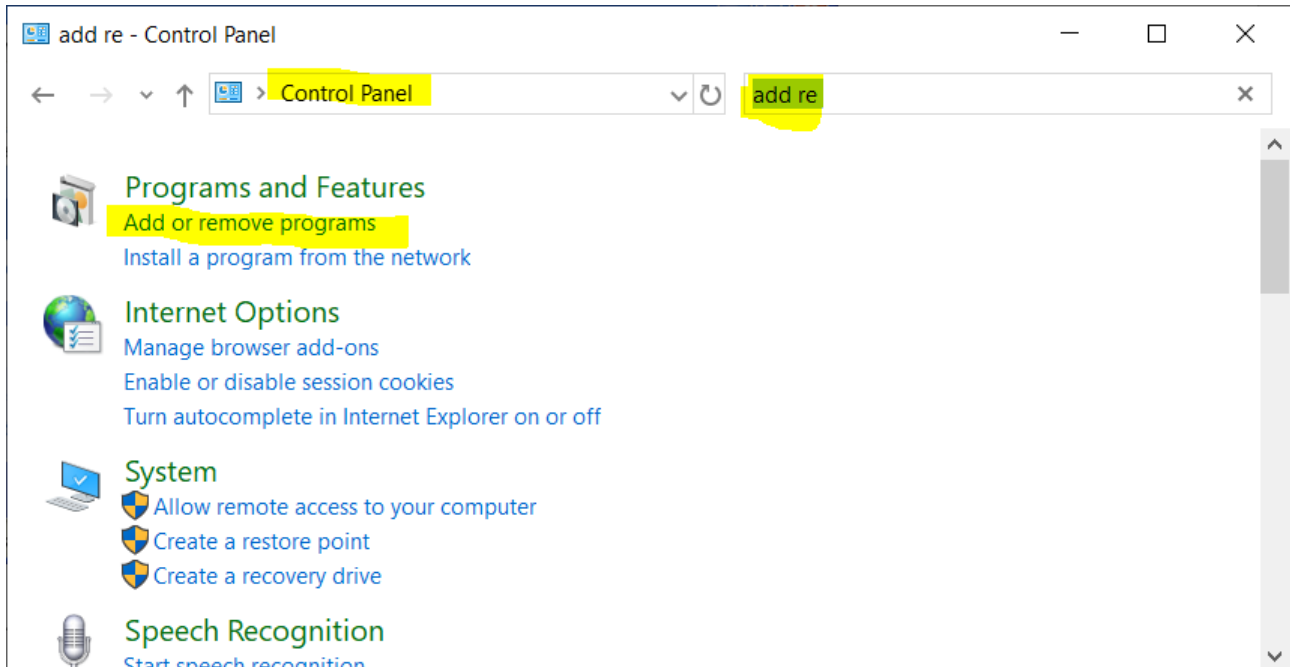
## Version QA

<b>Author</b>	<b>MP</b>	<b>25<sup>th</sup> August 2020</b>
<b>Checked</b>	LD	1 <sup>st</sup> September 2020

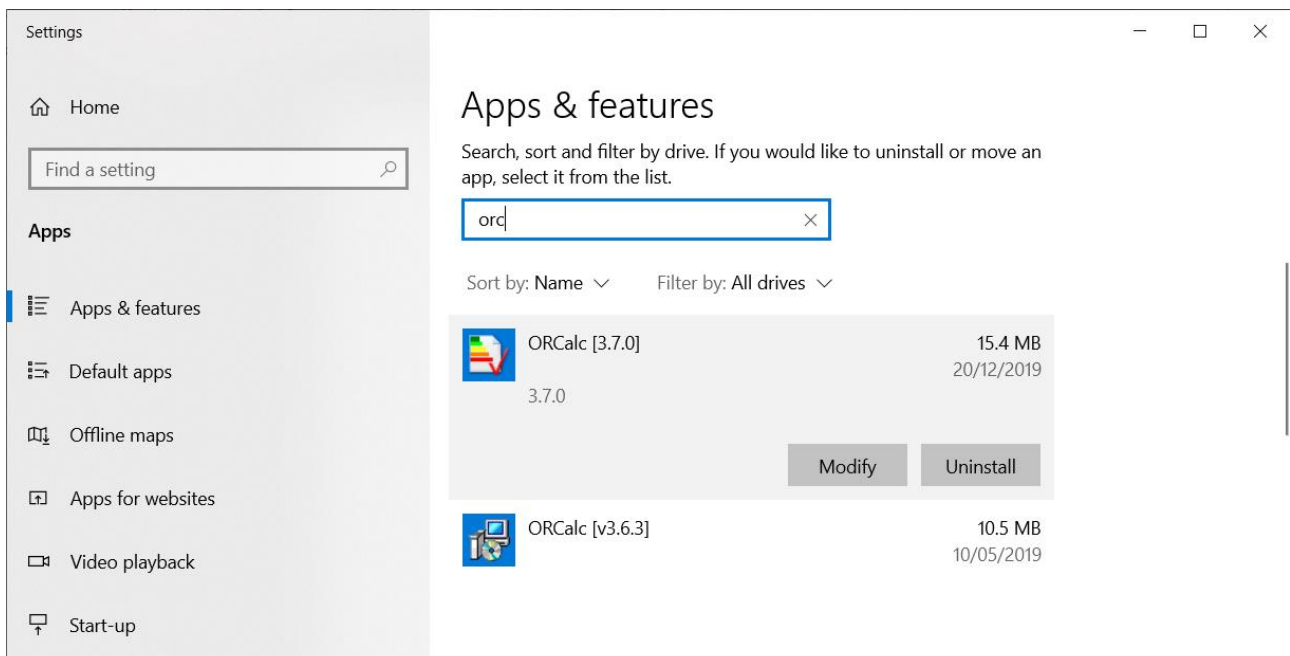
# Installation Guide

1 The installation files need to be extracted from its compressed format into an empty folder. Ensure that the file extraction process is carried out properly and completely (i.e. not through drag-and-drop into new folder). This ensures all required files are extracted for installation use and errors are avoided.

2 The user must ensure that previous installation/version of the software is removed. Please use windows 'Add or Remove Programs' facility found in 'Control Panel' to do so.



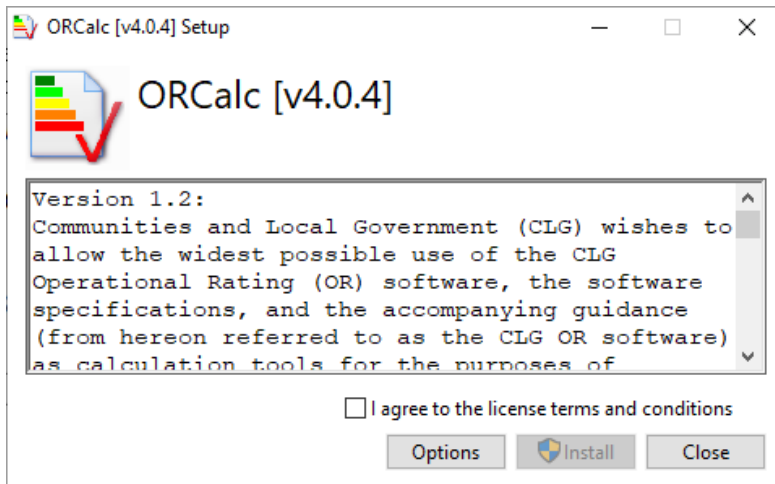
Then search for ORCalc and use the 'Uninstall' button:



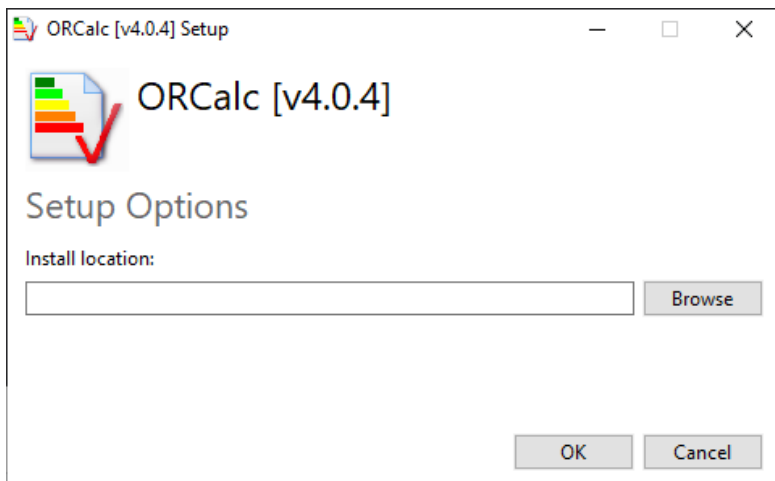
3 ORCalc requires **Microsoft .NET Framework 3.5** and an internet connection will be required to download the relevant .NET Framework patch. The user will be prompted automatically if this installation is necessary.

4 Some users might require administrator rights to install ORCalc or to update the Microsoft .NET framework. Hence access to this security levels may be required.

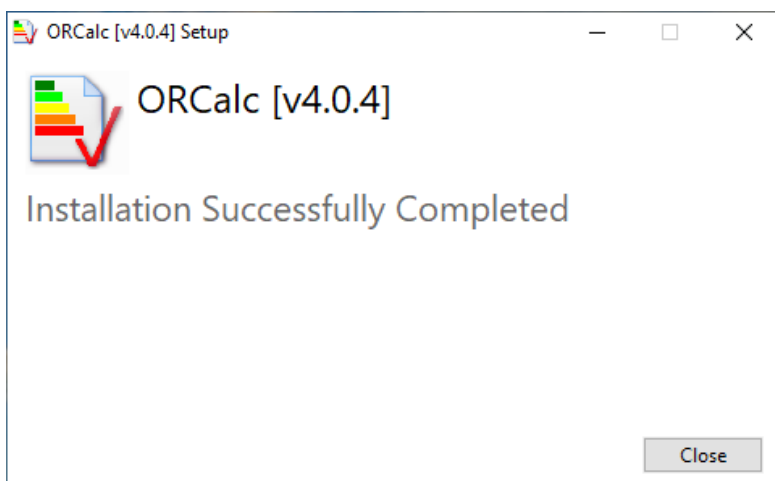
- 5 Click on the '**ORCalcInstaller.exe**' file to start installing the software
- 6 The user must agree to the CLG terms and conditions of usage shown before the software installation starts. Check the 'I agree' control and then either use the 'Options' button to specify the installation folder of the 'Install' button to continue with the default.



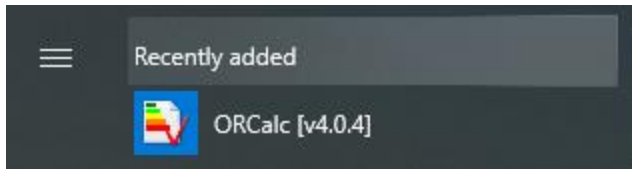
- 7 [Optional step]. If the user pressed the 'Options' button then now use the 'Browse' button to select a suitable installation folder. Then click "OK" to start the process.



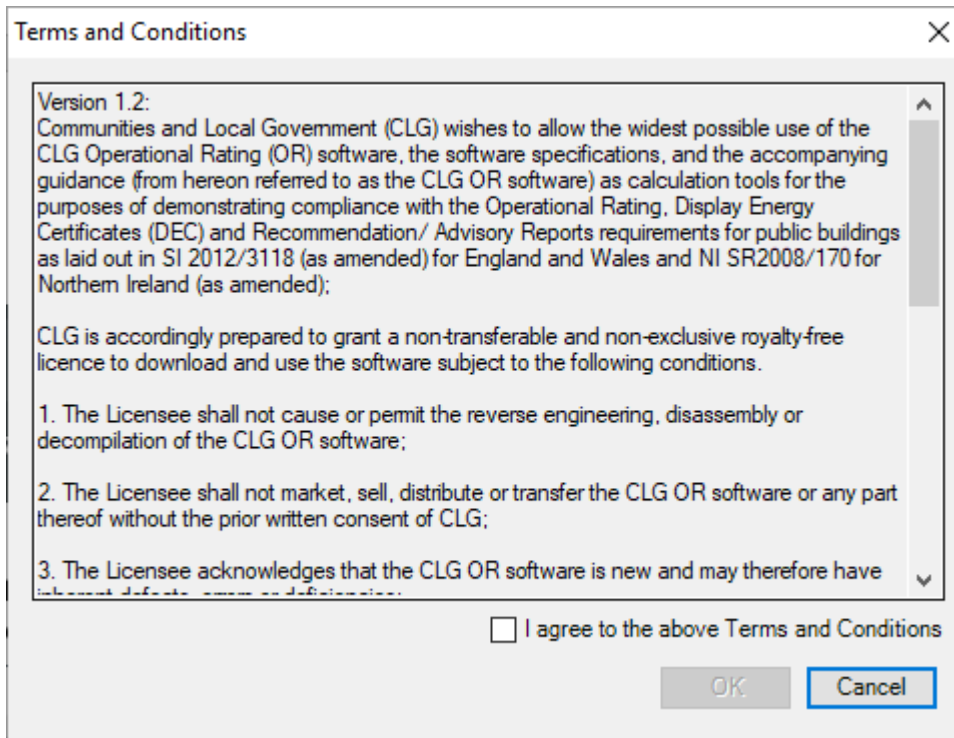
- 8 Note it may be necessary to agree to User Account warnings in some operating systems. Once complete the following message will be displayed:



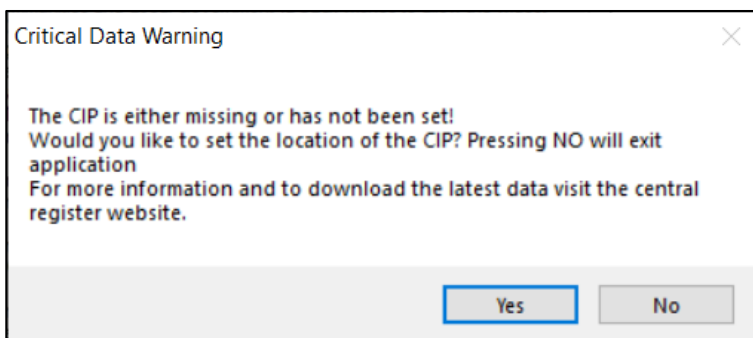
- 9 The application can then be started using the icon installed in the Windows Program list.



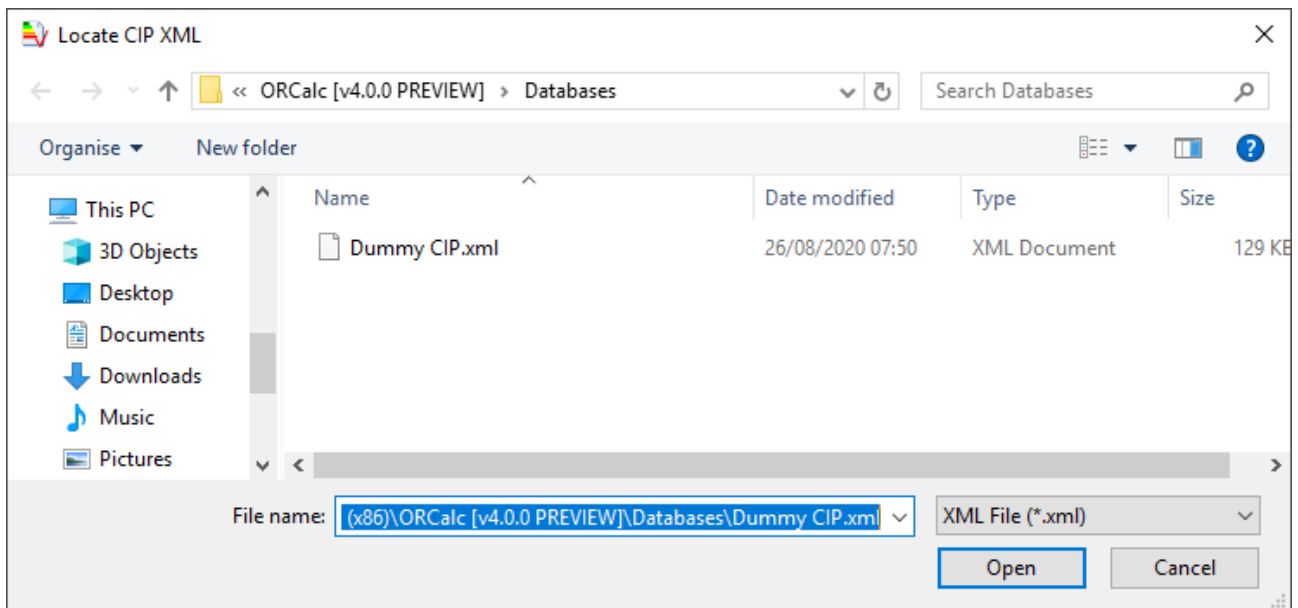
- 10 On starting the application for the first time the user will be asked to confirm the T&Cs. These are then subsequently available from the main menu:



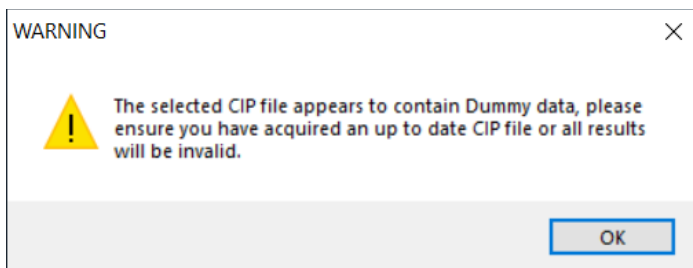
- 11 Before using the software, the user must link the software to the appropriate Central Information Point (CIP) XML file. A valid CIP XML file must be obtained from the Central Register or a government-approved Accreditation Scheme to produce accurate and valid Operational Rating (OR) outputs. When first loading the software the following prompt will be displayed.



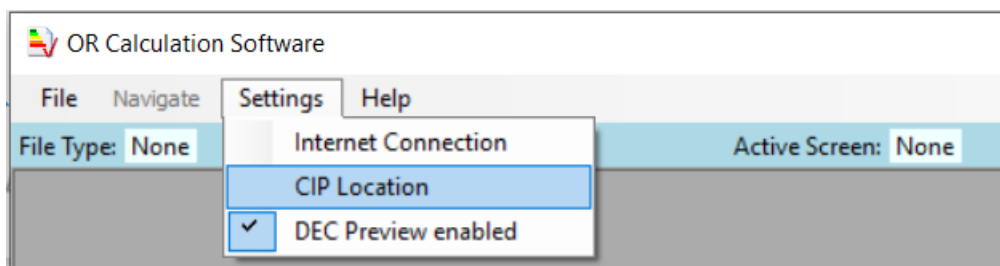
- 12 Clicking 'Yes' will prompt for a file. For trial and training purposes a dummy CIP has been made available with the ORCalc download package. The dummy CIP XML file is in the 'Databases' folder, which is automatically installed to the location selected during the ORCalc installation process. Please note that software using this CIP database will NOT produce valid and accurate OR outputs.



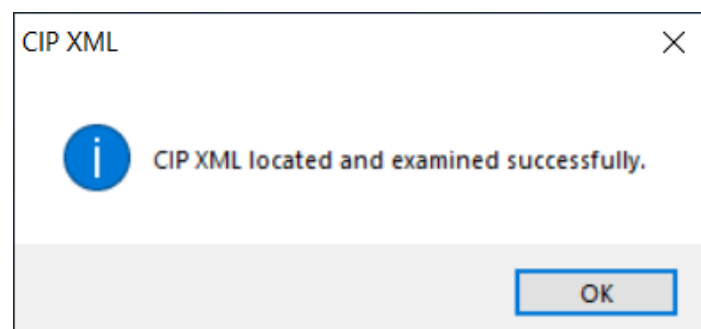
13 Selecting a Dummy CIP will display the following warning. Note the Dummy CIP will not produce accurate results and should be replaced before verified outputs are produced:



14 Should the user wish to change the CIP file then go to 'Settings' and click on 'CIP Location'. This opens a dialog where the user specifies the location of the CIP database (preferably on a local drive).



15 Successful linking to the CIP XML will be flagged by software.



16 ORCalc is now setup and ready to be used.